

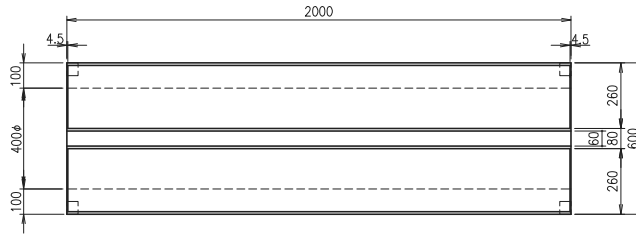
円形水路 NA型 (T-25)

φ400・φ400用集水枡

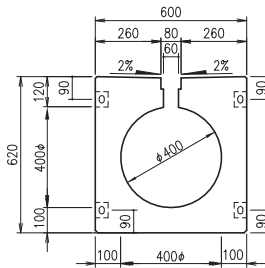
NA型 φ400

重量：1,126kg

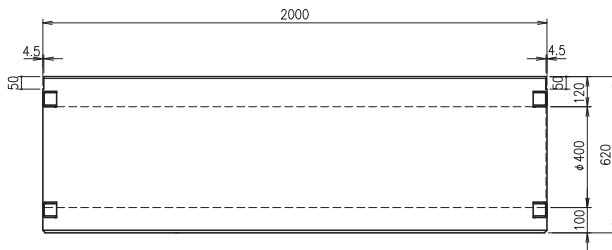
平面図



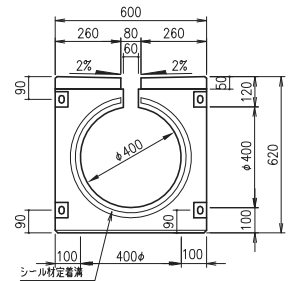
横断面図



正面図



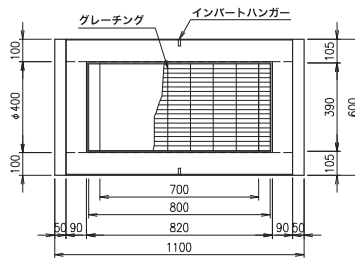
側面図



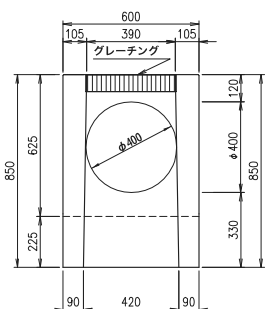
NA型 φ400用集水枡

重量：565kg

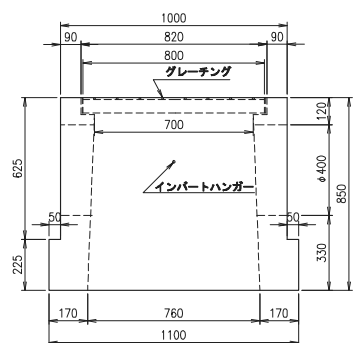
平面図



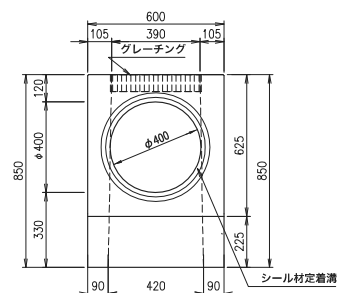
断面図



正面図



側面図



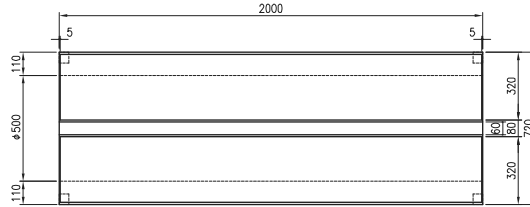
円形水路 NA型 (T-25)

φ500・φ500用集水樹

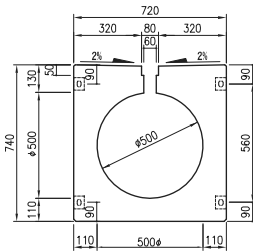
NA型 φ500

重量：1,388kg

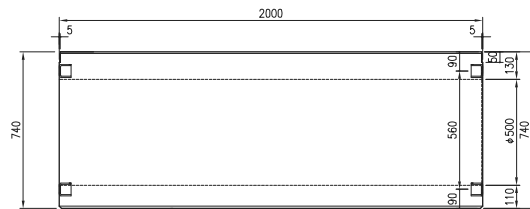
平面図



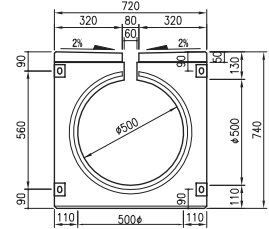
横断面図



正面図



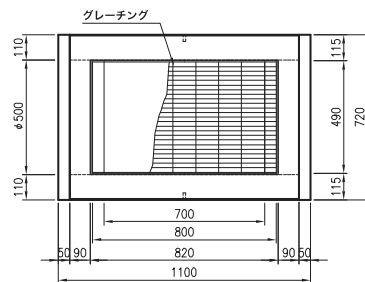
側面図



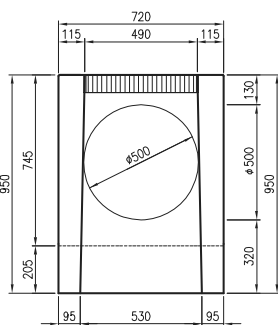
NA型 φ500用集水樹

重量：695kg

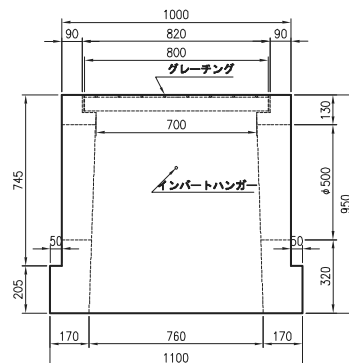
平面図



端面図



側面図



断面図

